

adf

architectsdatafile.co.uk

01.21

MAGGIE'S YORKSHIRE, LEEDS

Heatherwick Studio's first healthcare project is a natural wonder of timber ribs and green roofs, restoring landscape inside and out for cancer patients

THE MILL, LOUGHBOROUGH

Exploiting the historic lines of a former hosiery factory for luxury housing



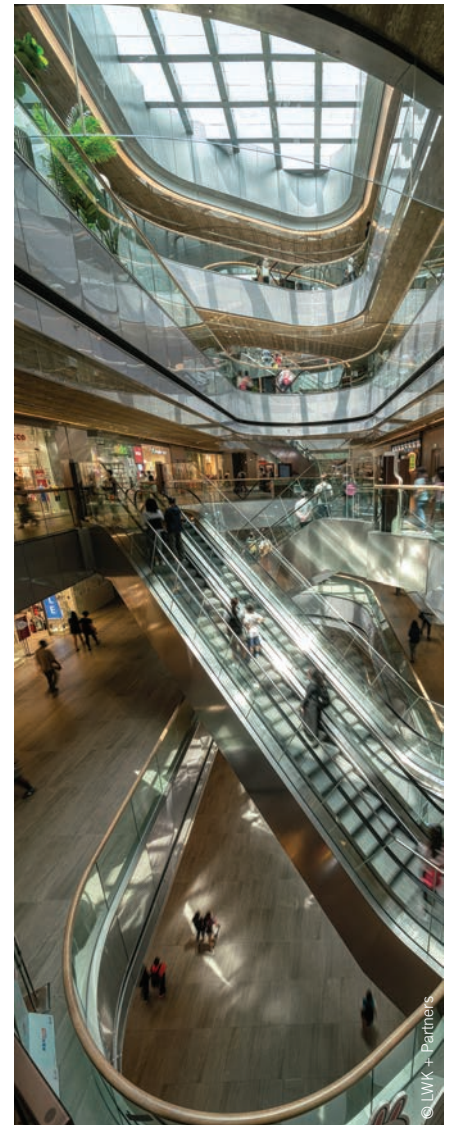
11 SKIES, HONG KONG LEAD8

Lead8 has unveiled its designs for 11 SKIES, a new HK \$20bn mixed-use destination at SKYCITY. 11 SKIES will feature 2.66 million ft² dedicated to retail and dining, as well as 570,000 ft² for “experiential entertainment” facilities. Once complete, 11 SKIES is set to be the largest indoor entertainment centre in Hong Kong, with over 800 shops and more than 120 “dining concepts” together with entertainment reportedly never seen before in the region, all under one roof. As part of the mixed-use development, 11 SKIES also integrates three grade A office towers covering 570,000 ft². Opening in phases from 2022 to 2025, 11 SKIES is set to deliver a “first-of-its-kind ecosystem, said Lead8, offering brand new experiences for retail, entertainment, dining, wellness and business in Hong Kong and the Greater Bay region.



PORTOPICCOLO SPA, GULF OF TRIESTE STUDIO APOSTOLI

Located in the Gulf of Trieste, Portopiccolo Spa has been named the winner of the 2020 World Luxury Spa Awards. Designed by Studio Apostoli, the 3,600 m² fan-shaped structure is spread over three levels with panoramic terraces, light-coloured stone surfaces, and large windows allowing breathtaking views. The ground floor houses the reception, children’s room, hair studio and changing rooms. On the first floor, the “in-out” pool is the main focus, completely glazed to enhance a “continuous dialogue with the landscape,” said the architects, and features a salt cave. On this floor is also a gym, a bar and restaurant, and the second floor houses the beauty spa itself.



CITYGATE MALL & SILVERI HOTEL, HONG KONG LWK + PARTNERS

LWK + Partners in collaboration with Arquitectonica have completed the extension of the Citygate Outlets mall and The Silveri Hong Kong – MGallery, a new five-star boutique hotel. The complex is located in Tung Chung, called the ‘Gateway to Hong Kong.’ The Citygate Outlets extension serves as a connectivity hub for the district, offering an extra 31,800 m² of contemporary retail spaces, while The Silveri Hong Kong – MGallery takes up the upper part of the building. The building features a curved curtain wall facade and aluminium cladding panels which are “adopted and wrapped” by bespoke parallelogram aluminium strips in a vivid mix of colours to produce a “refreshing, unique and dynamic character,” said the architects.