



# spa business insider

27 JANUARY 2026 ISSUE 493

A SPA BUSINESS PUBLICATION



## Aman to launch first superyacht

Aman's nine-deck superyacht, *Amangati*, is taking bookings for its debut season of Mediterranean voyages in Q2 2027.

The 180-metre yacht has been designed by Sinot Yacht Architecture and Design and is currently under construction.

When it sets sail, it will accommodate 94 guests across its 47 suites. Each will have a footprint of 68sq m to 354sq m and its own terrace.

The design for the Aman Spa has been inspired by Japanese ryokan, with full-height windows and private terraces that create an open, light-filled space and connection to the sea.

The 1,190sq m spa will be spread across two decks and it will have eight ocean-facing



■ The Aman Spa aboard the *Amangati* will have a hammam and a banya

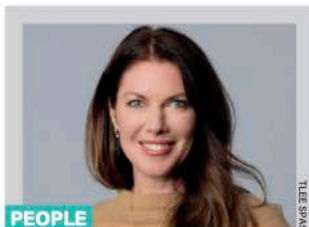
treatment rooms and a Japanese serenity garden for relaxation.

There will also be open-air hot tubs, a hammam with polished marble benches for Turkish and Moroccan-inspired bathing experiences, a banya, showers and relaxation spaces.

Treatments will be rooted in four guiding pillars: nutrition, movement, psychological health and bodywork.

Passengers will have access to a medi-spa for aesthetic services, a beauty lounge, fitness studio and a meditation and yoga deck.

**MORE >>>** [http://lei.sr/C5j9H\\_B](http://lei.sr/C5j9H_B)

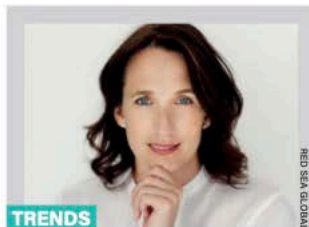


### PEOPLE

Jeanine Allpress-Cliffe joins TLee Spas as VP

She will lead on strategic growth and strategy

p02

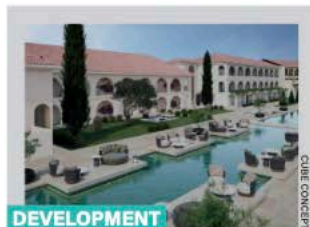


### TRENDS

Lindsay Madden-Nadeau: wellness travel has evolved

Guests are seeking wellness ecosystems

p08



### DEVELOPMENT

Hilton's first luxury resort in Greece will open in Q2

Numo Hotels & Resorts will run Conrad Corfu

p12

*Myrtha Wellness is far more than a supplier; with WellGate we're the visionary architects of extraordinary experiences*

Stefano Cattaneo, Myrtha Wellness



# Deeply Immersed

Myrtha has collaborated with famed architect, Alberto Apostoli, to create WellGate, a customisable thermal suite

**T**here's a defining moment in every wellness ritual when people cross a threshold and leave the frenzy of the world behind, entering a dimension where time slows.

It is from this concept of transition that WellGate is born. The new thermal suite was designed by Studio Apostoli for Myrtha Wellness and is a milestone in the evolution of contemporary spa culture.

WellGate turns wellness into a holistic journey, combining architectural clarity, refined materials and advanced engineering. Its distinctive structure settles easily into luxury hotels and wellness retreats offering the elegance of a customisable design that can be tailored to the architect's vision.

Stefano Cattaneo, director of Myrtha Wellness says: "We're far more than a supplier; with WellGate - where design, technology and a holistic approach converge - Myrtha Wellness is the visionary architect of extraordinary experiences."

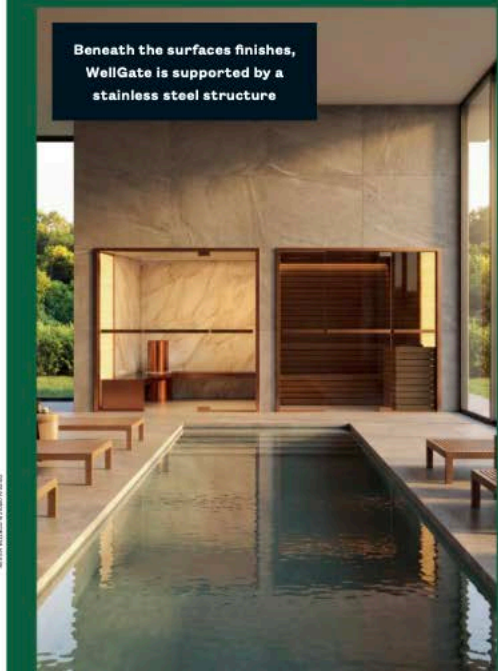
## **WellGate connects thermal experiences**

A fluid sequence connects sauna, steam bath and frigidarium, while circular elements such as sculptural illuminated steam devices, ice fountains and soft geometries - reinterpret the forms of water through light and motion.



MYRTHA WELLNESS / STEFANO PIZZOLI

**Beneath the surfaces finishes, WellGate is supported by a stainless steel structure**



MYRTHA WELLNESS / STEFANO PIZZOLI

The WellGate portfolio of products includes a steam bath, frigidarium and sauna



Illuminated panels, called Lesena, create a soft and enveloping atmosphere within the steam bath and sauna and are available in customisable printed glass to harmonise with different interior styles. There is also the option of colour-changing RGB lighting.

A defining feature of WellGate is its invisible intelligence, with steam generation, heat distribution, water management and integrated audio all hidden from view. Beneath its elegant surfaces finishes, WellGate is supported by a stainless-steel structure built with exclusive Myrtha Technology, guaranteeing durability, hygiene and design flexibility.

### Choose from a range of curated styles

WellGate is a next-generation ecosystem where technology becomes emotion and design becomes experience. It sets a new, authoritative benchmark for high-end thermal spa environments.

Three curated styles – **Luxury** with fine woods and stone textures, **Elegance** with perforated patterns and refined gold and black accents and **Design** with the purity of full-white or full-black monochromes – enable customisation by the architect.

*With WellGate, we redefine the concept of Wellness Architecture as a sanctuary where Italian design meets Myrtha's engineering expertise*



Alberto Apostoli, Architect and CEO, Studio Apostoli

In creating WellGate, Myrtha has transferred the expertise it's developed as a supplier for six Olympic Games, bringing patented technologies, advanced material science and precision engineering into wellness design.

Thanks to this transfer of Olympic-level tech, Myrtha is able to offer a 25-year structural warranty on its stainless steel thermal rooms, ensuring long-term performance, durability and reliability. ●

See our client list at: [www.myrthawellness.com](http://www.myrthawellness.com)