

October 2019 | Vol. 6 | Issue 66 | £200

DESIGN detail

the architecture magazine



**ETERNAL
DESIGN OF
THE LIMITLESS MIND**
WALLASIA

**PERMUTING
PEDAGOGY**

ESCAPE INTO TRANQUILITY

by Team Design Detail
PHOTO: FRANK RAPPOLD, MATHIAS PERLEB, LINDSEY CRONIN

During the development of a new town, it's important to create a sense of atmosphere and to make your clients feel like they're in a special place. Design Detail's new town, located in a beautiful coastal town, is a perfect example of how to create a sense of atmosphere and to make your clients feel like they're in a special place. The project is a mix of modern and traditional architecture, all of which will help to create a sense of atmosphere and to make your clients feel like they're in a special place.



The pool and pool creates a seamless transition of space



The pool and pool creates a seamless transition of space

Amidst the Adriatic Sea and Slovenia lies the fascinating seaport city known as Trieste. Portogotico, the Italian province is an eco sustainable village designed in the heart of the Gulf of Trieste. It's an ambitious project which revived the Sotiana Bay quarry that was abandoned in the seventies with an image of urban environmental rehabilitation. The Spa of Portogotico provides personalized treatments, while offering an exciting seaside of frolic terrace. The design concept is evolved into three levels with a basement floor that serves as parking and service spaces. The idea took form following a series of lifts of the cliff overlooking the sea, alternating natural coloured stone with transparency of glass making the whole structure light. Encompassing an area of 3600 square meters, it merges with the surrounding context, with breathtaking views for the guests. The architecture evokes the feeling of wellness, radiating from a collective and shared dimension on the ground floor, while closely curating it with intimacy and privacy as you ascend.

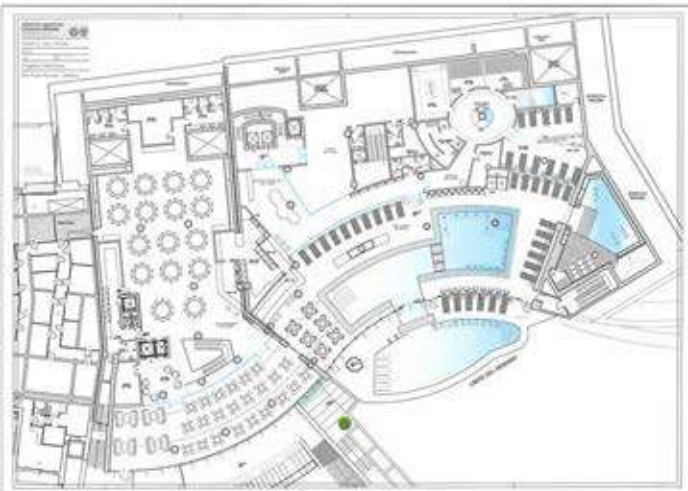
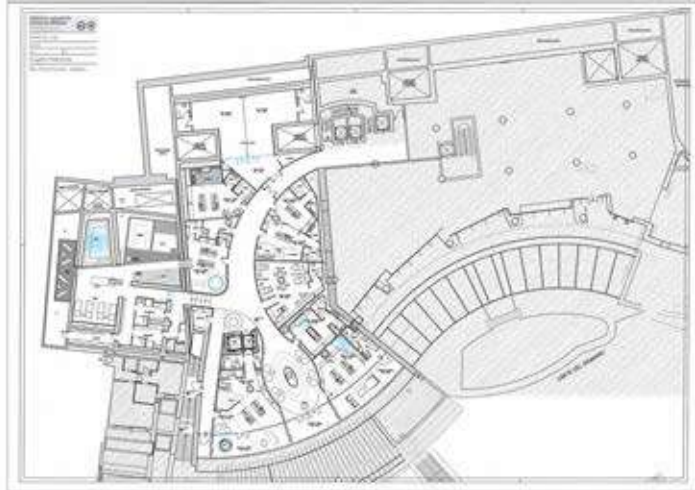
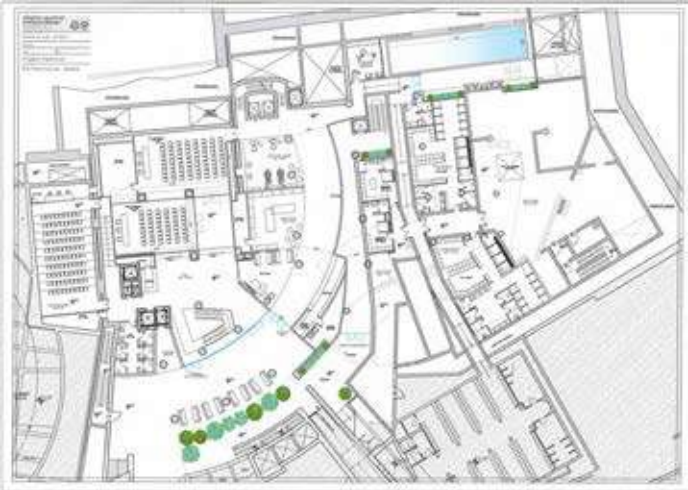
The building is fully glazed which interacts seamlessly between the interior and exterior. An imposing covered porch welcomes the customers into the grand interior. The fan shaped colonnaded structure underlines the



Experience the elevated views to the Gulf of Trieste

FACT FILE

PROJECT TITLE	PORTOGOTICO SPA
LOCATION	SISTIANA, ITALY
PRACTICE	STUDIO APOSTOLI
TYPOLOGY	WELLNESS
AREA	3600 SQM
YEAR	2017
PROJECT MANAGER	FRANCESCA MORINI





AR. ALBERTO APOSTOLI

STUDIO APOSTOLI

Studio Apostoli is a multidisciplinary design firm comprising of 50 professionals that combines architecture, engineering, interior design and product design to offer a holistic and harmonious service. The firm was founded by Alberto Apostoli in 1997 in Verona, Italy. The firm seeks to offer quality design through the effective dialogue between multiple disciplines all encompassed in a single roof. The firm offers these services through its sister brands, Apostoli Engineering and Studio Apostoli & Associati; project management. It also provides some additional services such as Brand Design, Cost Control, Procurement, Integrated Communication, R & D, Business Planning, Due Diligence and Energy Management. The firm has projects for and wide with an array of international clientele and are known for their expertise and specialisation in the wellness sector.

contrasting stoneless flooring while imposing 'corer' pillars that frame the entrance, while the reception is conceived as a single continuous element between the inside and outside. This helps to specifically manage and direct the circulation in and around the whole building. The first floor benefits from windows dominated by an in-out pool that seamlessly blends with outside and the bay. The area is equipped with emotional showers, both, hammams and saunas to immerse into the depths of calmness. A salt cave is designed with care using local white Karst stone, where guests can inhale mineralised iodine or bathe in the salt tub. The floor also houses a gym, personal training studio and a cocktail bar along with a restaurant that serves the wellbeing of the customers. All spaces can be modulated based on opening glass walls which can

alternate between single spaces or many dedicated environments. The last floor is exclusively set for the Beauty Spa with a delightful waiting lounge. A slight elevation to embrace greater tranquillity, seated around a column becomes the fulcrum of the space set for the Spa and other numerous cabins integrated to offer wide variety of treatments. The column is surrounded by a bath and an ice-cave, while the outer shell constructs a single glazed curved wall to envelop those spaces. A naturally shaped pool of saline water gently laps the shores of salt-crowded environment engaging in an intimate elemental experience. The luxury and the aesthetic impact do serve the architectural dialogue that striles an energetic chord of eternal wellbeing with its customers elevating into a euphoric state of mind.

55

